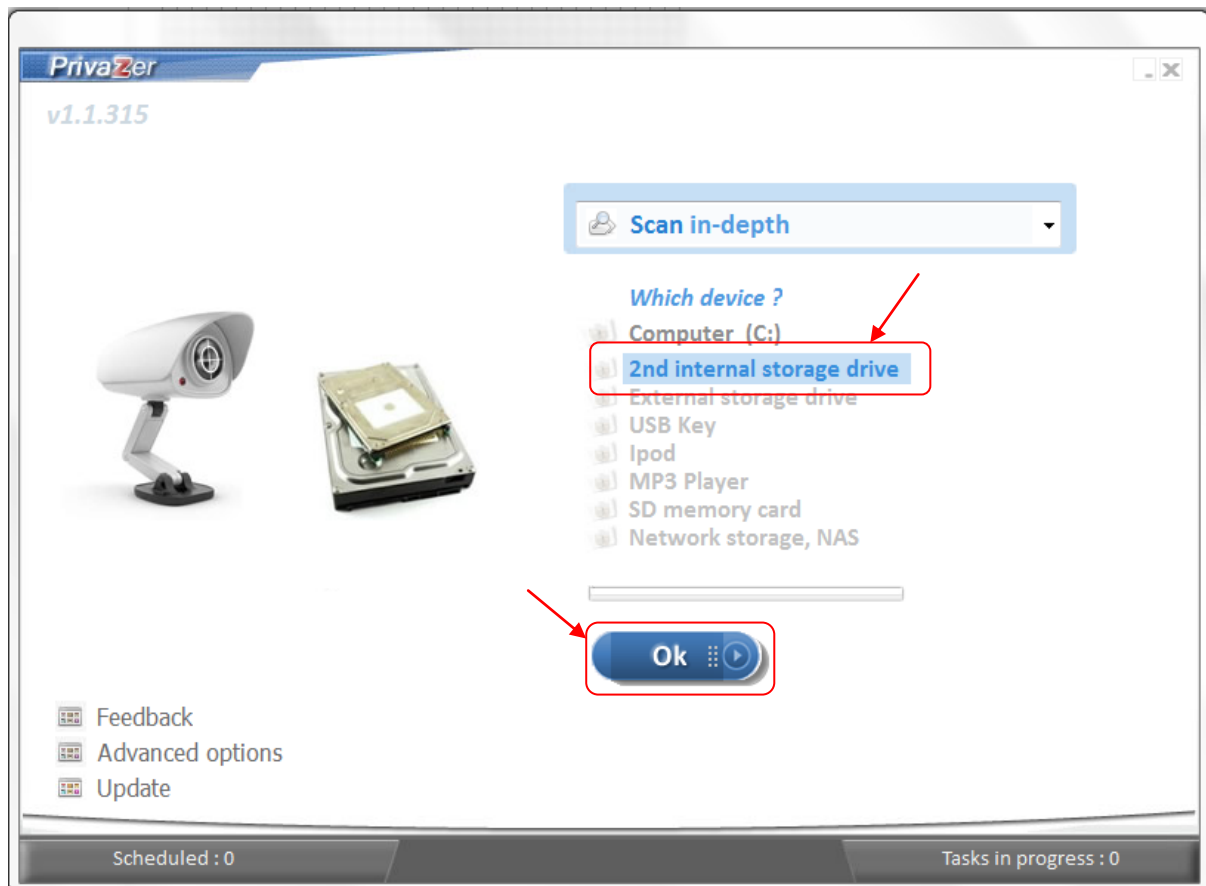


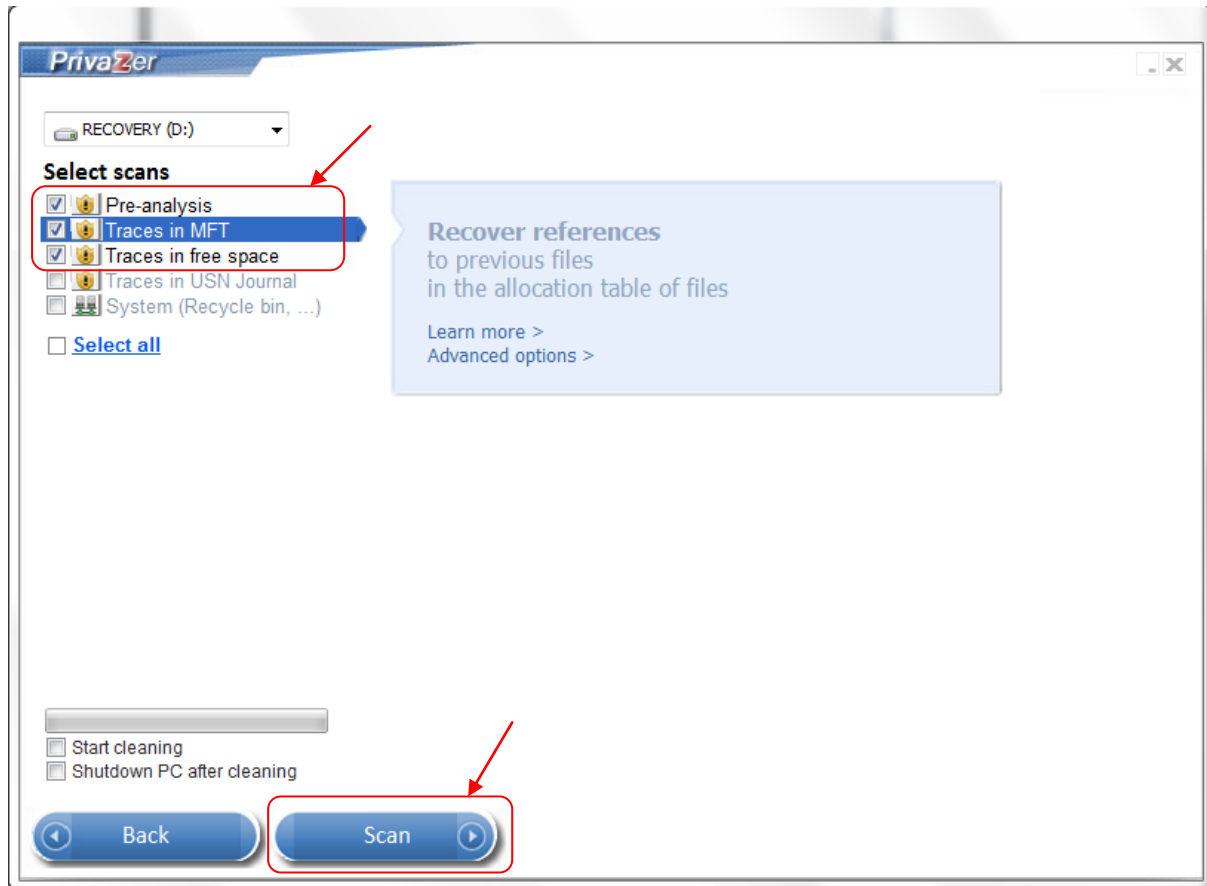
Test Number 3:

Detection of residual traces in free space

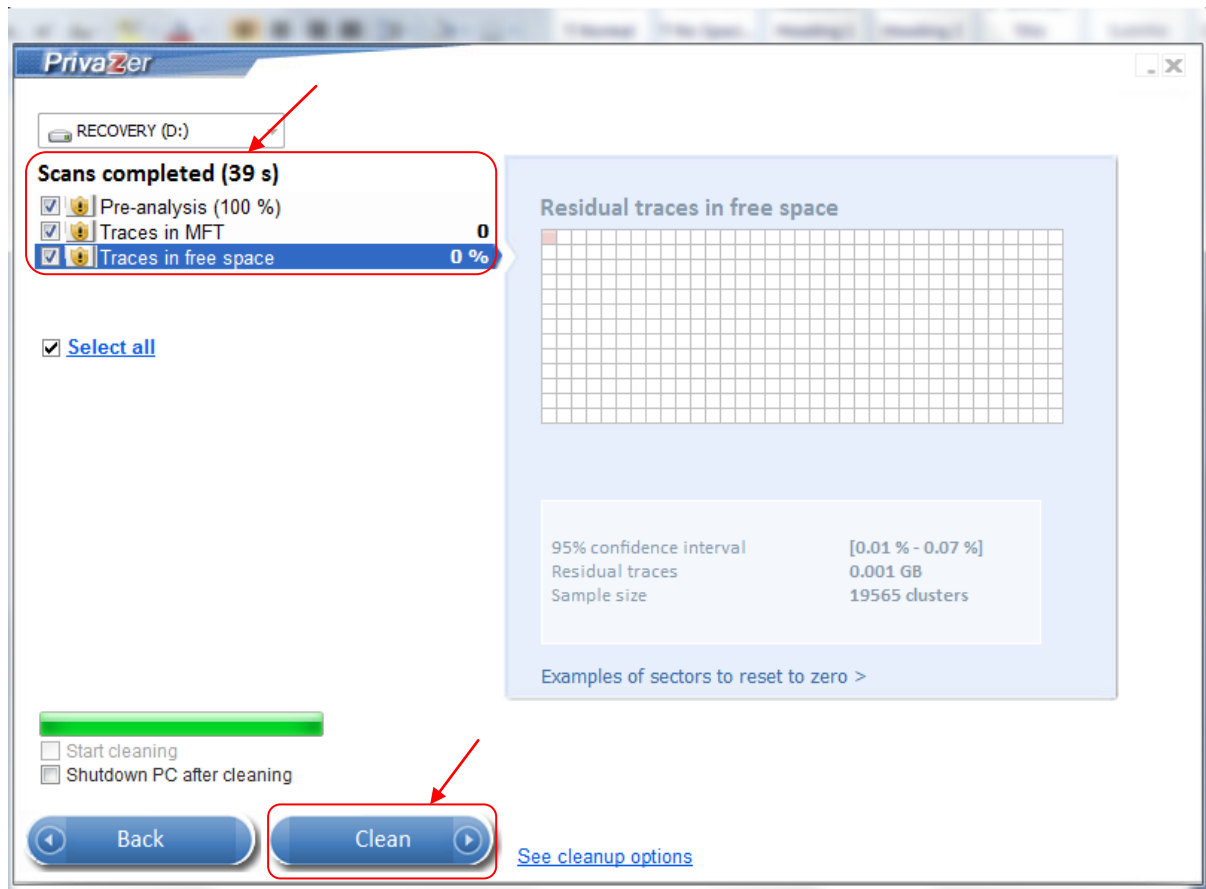
Step 1: Launch and run PrivaZer software and select "2nd internal storage drive" and click OK button.



Step 2: In order to scan only "Traces in MFT", please uncheck "Select all" and check "Traces in MFT" check box and then click on "Scan" button. (Note: When "Traces in MFT" is selected, "Pre-analysis" and "Traces in free space" get selected by default).



Step 3: The results of the scan for "Traces in MFT" for "2nd internal storage drive" will be shown in the window as below. Click on "Clean" button to proceed with Cleanup.

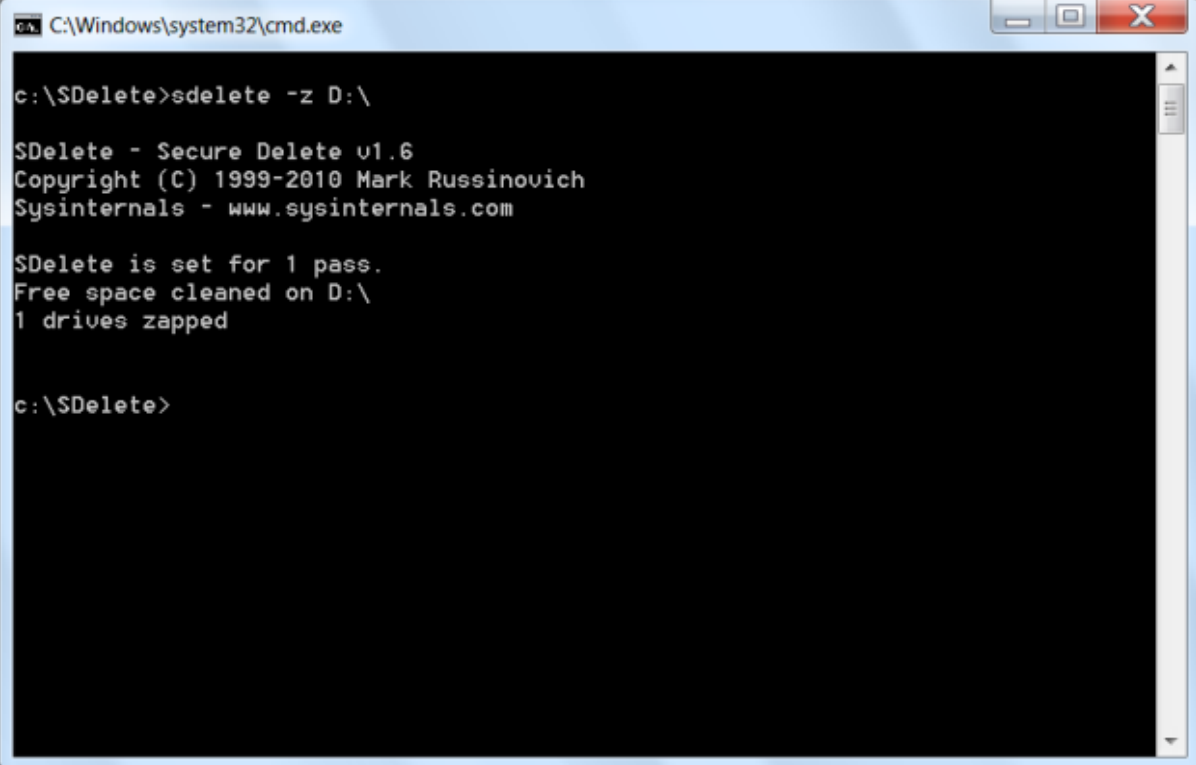


Step 4: The results of the Cleanup for "Traces in MFT" for "2nd internal storage drive" will be shown in the window as below. Click on "Close" button to close the Cleanup window.



Step 5: Download the free version of SDelete from the Microsoft website (<http://technet.microsoft.com/en-us/sysinternals/bb897443>). Unzip the downloaded file to a directory. For ex: "c:\SDelete"

Step 6: Go to the directory where your SDelete file is located. Select a drive to run SDelete on. Please select second internal drive instead of C: drive. For ex: D: drive. Reset the selected drive to zero free space with SDelete by using option -z to zero current drive free space. Please type "SDelete -z <drive>" and click enter to start the SDelete.



```
C:\Windows\system32\cmd.exe

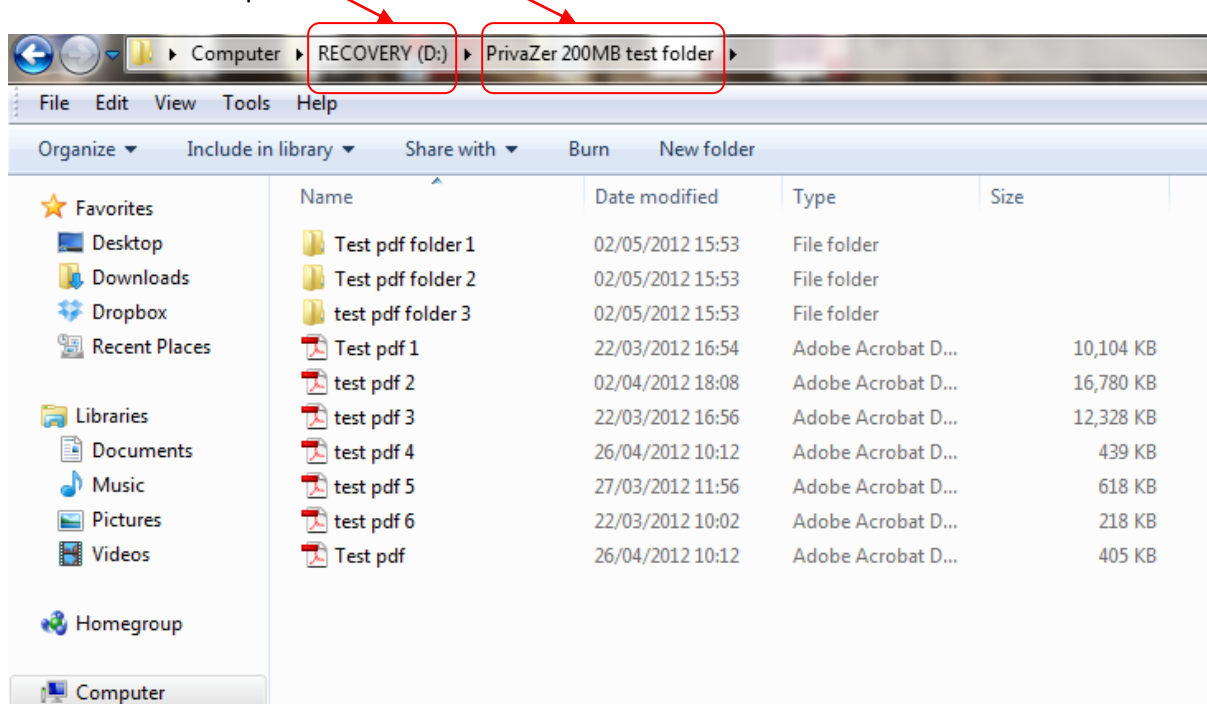
c:\SDelete>sdelete -z D:\

SDelete - Secure Delete v1.6
Copyright (C) 1999-2010 Mark Russinovich
Sysinternals - www.sysinternals.com

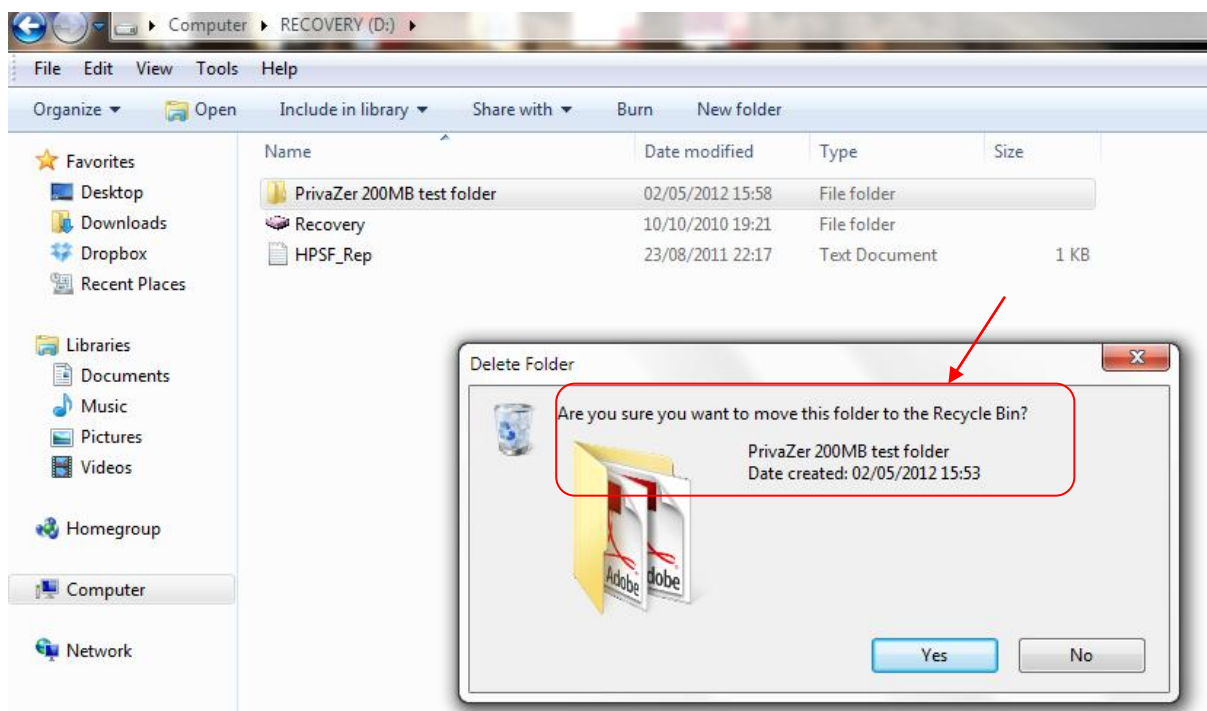
SDelete is set for 1 pass.
Free space cleaned on D:\
1 drives zapped

c:\SDelete>
```

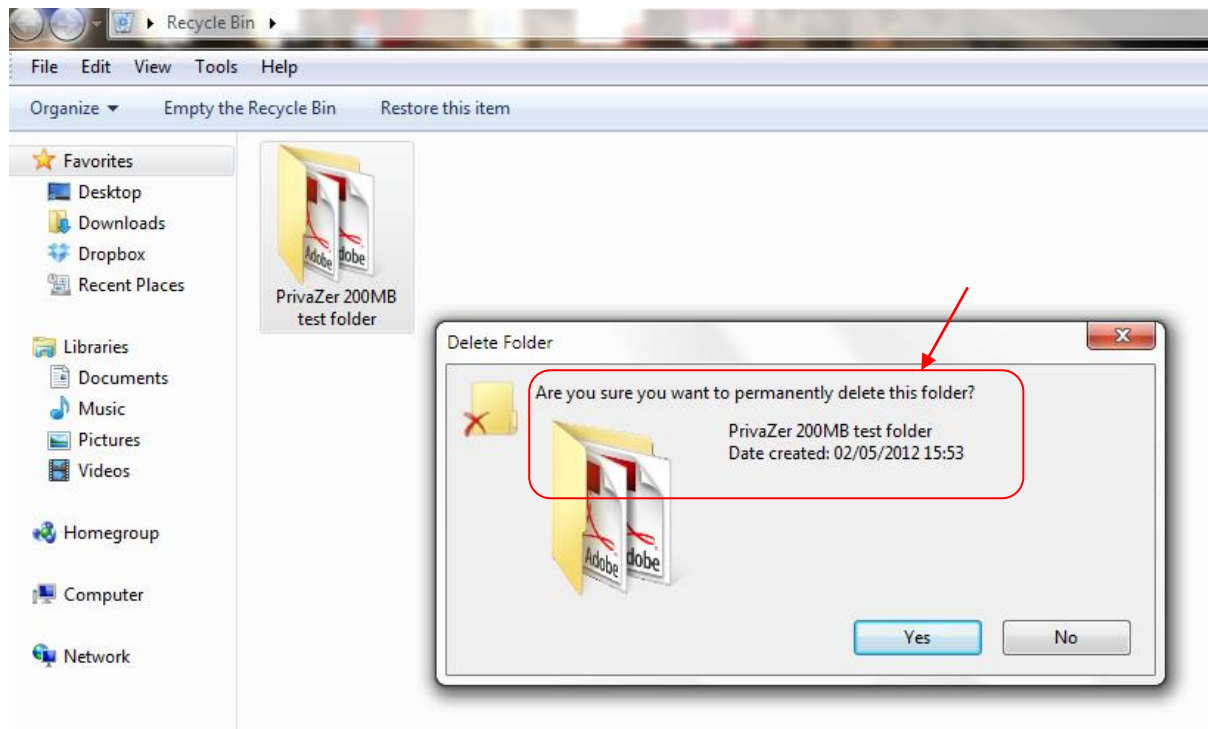
Step 7: Copy a “test file” of size 100MB or more in “2nd internal storage drive” i.e. (D:) drive in this example.



Step 8: Now delete this test file.



Step 9: Empty this test file from Recycle Bin as well.



Step 10: Now again launch and run PrivaZer software and repeat step 1 to step 3. The Scan results window for "Traces in MFT" for "2nd internal storage drive" will be shown as below.

PrivaZer detects residual traces left by the file

- in the free space (red color) and
- in the file table (FAT or MFT).

